



Peralta Community College District
Program Management Outreach

Thursday, May 28, 2020 10:00am



Agenda

- Welcome
- Introduction to PCCD
- Measure G Overview
- How to do Business with PCCD
- Introduction to Program Management Team
- Program Overview/District Projects/Program Oversight
- CUPCAA/Procedures
- Selection Process
- Commitment to Local Businesses
- Survey
- Q&A



Welcome

Chancellor Dr. Regina Stanback Stroud, PCCD



“On behalf of the Board of Trustees, students, staff, and faculty of Peralta Community College District, I would like to express my deep gratitude for the generosity and support of the citizens of Alameda County.”

—Dr. Regina Stanback-Stroud, Chancellor Peralta Community College District

How to do Business with PCCD

Atheria Smith, PCCD

Director, Bond Program Facilities Planning and Development

- Vendor Registry
- Small Local Business Program

The screenshot displays the BuildPERALTA website. At the top, there is a navigation bar with the logo and the text "BuildPERALTA". To the right of the logo are links for "About", "Projects", "Reports", "Oversight", "Doing Business", and "Contact Us". A button labeled "Contracts & Bidders" is also present. Below the navigation bar, a central message asks "Interested in Doing Business with Peralta?" and features the "Vendor Registry" logo with the text "Click here to register today." Below this is a link "Click here to view current opportunities." The main content area is titled "Peralta Small Local Business Program" and contains a paragraph of text: "The District is committed to ensure equal opportunity and equitable treatment in awarding and managing its public contracts and has established an annual overall program goal of twenty-five percent participation for small local businesses. To facilitate opportunities for small local business, the District will use a maximum 5% bidding preference for SLBE and SELBE firms. The preference is only used for computation purposes to determine the winning bidder, the contract is awarded at the actual bid amount. Please review the following guidelines to see if your firm qualifies for the preference." Below the text is a button labeled "Download SLBE PDF Document". In the bottom right corner, there is a language selector showing "English" with a right arrow.

Introduction of Presenters

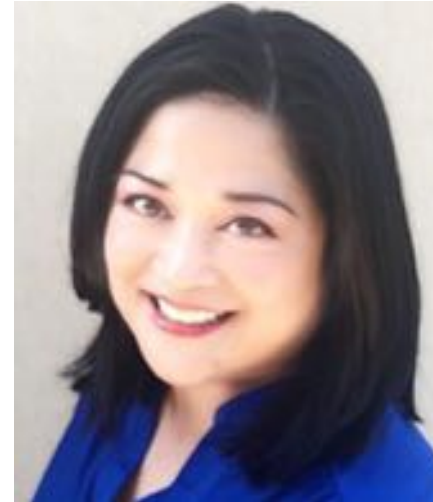
Keith Kajiya, AECOM



Keith Kajiya, AECOM
Program Overview/
District Outreach



Ray Loving, AECOM
Program/Procurement
Lookahead



Sharon Serrano, AECOM
Selection Process

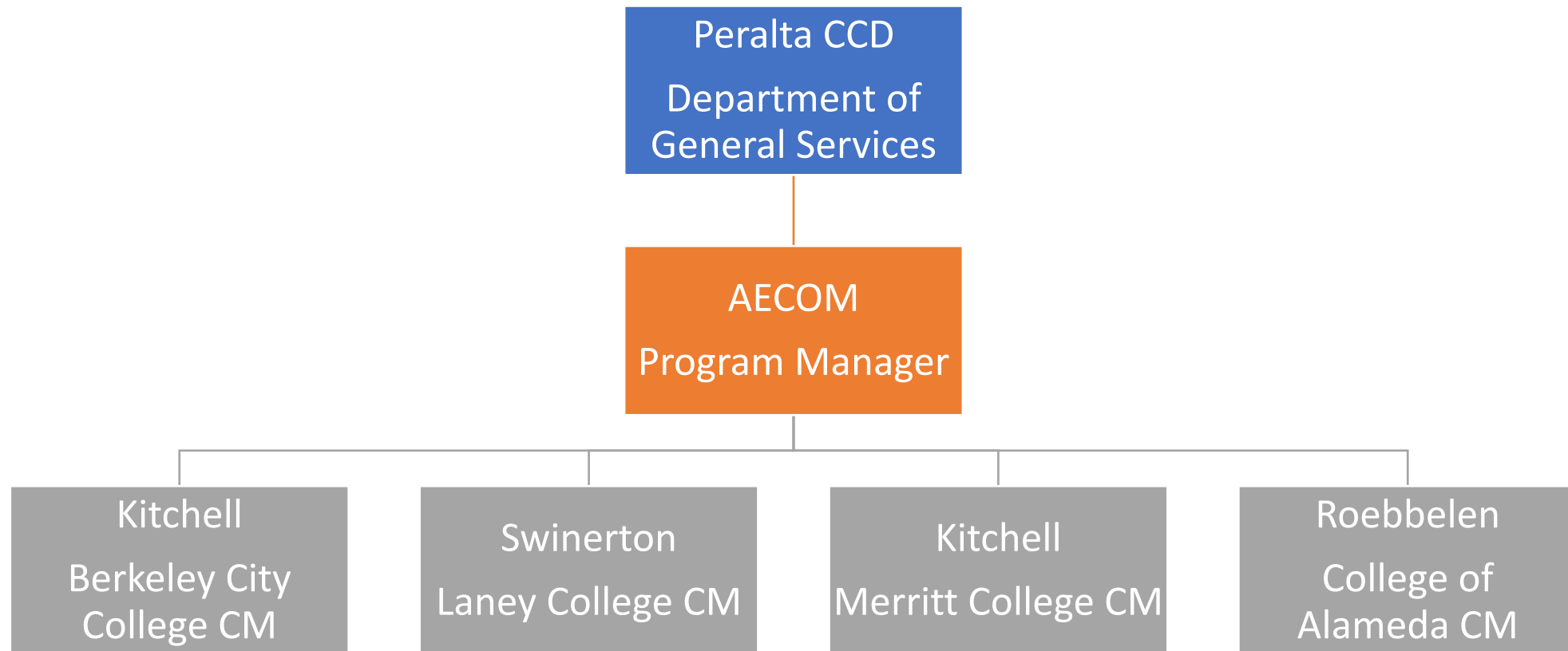


Shonda Scott, 360
Commitment to Local
Business

Program Overview

Keith Kajiya, AECOM

Program Management Organization



Program Overview

Keith Kajiya, AECOM



Overall Timeline



Types of Projects




Delivery Methods



College of Alameda Campus

College of Alameda

Keith Kajiya, AECOM

 BuildPERALTA		Delivery Method	Planning	Programming	Schematic Design	Design Development	Construction Documents	DSA Review/Approval	Construction	Next Procurement
Active Projects in Pre-construction										
College of Alameda										
	Auto and Diesel Technology Building	D-B-B								General Contractor
	Aviation Complex Phase 1	D-B-B								General Contractor
	Aviation Complex Phase 2	D-B-B								Architect

B-B = Bid Build

D-B-B = Design Bid Build

D/B = Design Build






Merritt College Campus

Merritt College

Keith Kajiya, AECOM

 BuildPERALTA		Delivery Method	Planning	Programming	Schematic Design	Design Development	Construction Documents	DSA Review/Approval	Construction	Next Procurement
Active Projects in Pre-construction										
Merritt College										
	Child Development Center	D-B-B								General Contractor
	Horticulture Building Replacement	D-B-B								General Contractor
	Science & Allied Health Building TI Buildout	D/B								Scoping Architect

B-B = Bid Build

D-B-B = Design Bid Build

D/B = Design Build






Berkeley City College Campus

Berkeley City College

Keith Kajiya, AECOM

		Delivery Method	Planning	Programming	Schematic Design	Design Development	Construction Documents	DSA Review/Approval	Construction	Next Procurement
Active Projects in Pre-construction										
Berkeley City College										
Phase 1 Expansion - New Milvia Street Building	D/B									CEQA Consultant

B-B = Bid Build

D-B-B = Design Bid Build

D/B = Design Build




An architectural rendering of a modern building at dusk. The building features a prominent red brick upper section and a large glass facade on the lower level. The interior is brightly lit, showing a multi-level atrium with people walking and sitting. The sky is a mix of blue and orange, suggesting sunset. In the foreground, a paved plaza is populated with various people, including a man with a dog and a group of people sitting on a bench. Trees are scattered throughout the scene, some in the foreground and some reflected in the glass.

Laney College Campus

Laney College

Keith Kajiya, AECOM

		Delivery Method	Planning	Programming	Schematic Design	Design Development	Construction Documents	DSA Review/Approval	Construction	Next Procurement
Active Projects in Pre-construction										
Laney College										
	Modular Village	D-B-B								General Contractor
	EBMUD Water Main Relocation	B-B								Mechanical Contractor
	Locker Room Modernization	D/B								Design Build Entity
	Central Utility Plant /Cooling Tower Relocation	D/B								Design Build Entity
	Library Learning Resource Center	D-B-B								General Contractor
	Theater Modernization	D-B-B								General Contractor

B-B = Bid Build

D-B-B = Design Bid Build


D/B = Design Build





District-Wide Projects

Keith Kajiya, AECOM

 BuildPERALTA		Delivery Method	Planning	Programming	Schematic Design	Design Development	Construction Documents	DSA Review/Approval	Construction	Next Procurement
Active Projects in Pre-construction										
District-wide Projects										
	Professional Service Bench Contracts	N/A								Consultant RFQ
	Infrastructure Projects <\$200K	CUPCCAA								Designers and CUPCCAA Contractors
	Infrastructure Projects >\$200K	D-B-B								Designers and Contractors
	Information Technology	Varies								Suppliers, Designers and Contractors

B-B = Bid Build

D-B-B = Design Bid Build

D/B = Design Build



<https://build.peralta.edu/>



BuildPERALTA

[About](#) [Projects](#) [Reports](#) [Oversight](#) [Doing Business](#) [Contact Us](#)

[Contracts & Bidders](#)

Laney College

[Click here to view projects](#)

**Bringing positive change
to our community.**

The Peralta Community College District would like to thank the residents of our community for the strong vote of confidence in the District and our Peralta Colleges! During the election of Nov. 2018, Northern Alameda County voters overwhelmingly approved Measure G, the District's \$800

Voter Approved Bonds

**Measure A
Measure G**

CUPCCAA Procedures Used with Bid Thresholds

Ray Loving, AECOM

- \$60,000 or less
 - Negotiate contract or issue purchase order (PCC 22032(a))
- Over \$60,000 and up to \$200,000
 - Informal Bidding (PCC 22032 (b))
- More than \$200,000
 - Formal Bidding – (PCC 22030(c))



Informal Bidding Procedures

Ray Loving, AECOM

Registration of Contractors (Voluntary)

- Each November, District Mails notice to designated trade journals, inviting contractors to submit the following information:
 - Contact name and mailing address
 - Contact phone number, fax number, and email address
 - Type of work contractor is interested in performing
 - Type of work contractor is licensed to perform
 - Contractor's license class and number
- New list may be created January 1.
- District must include contractors that submits required information during the calendar year or the prior November or December.
- At any time, Contractor may provide required information and be added to the list.
- District can eliminate contractors from prior list who do not annually reapply for inclusion on the list



Upcoming Procurements

Ray Loving, AECOM

- Architectural Services
- California Environmental Quality Act
- Civil Engineering
- Commissioning
- Geotechnical Engineering
- Hazardous Materials
- Inspectors of Record
- Landscape Architecture
- Mechanical & Electrical Engineering
- Site Surveying
- Structural Engineering



Selection Process

Sharon Serrano, AECOM

Example Projects

- Portables (Swing Space, Eagle Village)
- Locker Project

Process

- Bench Service Contracts
- Process:
- Post RFP on the website
- Contact companies on the bench
- Evaluate proposal
- Board Approval



Commitment to Local Businesses

Shonda Scott, 360 Total Concept

- PCCD Small Business Policy
 - 25% Small Local Business Participation
- Certification
- Monthly Technical Assistance Workshops
- Monitoring/Compliance
- Future Outreach Meetings
 - Email buildperalta@peralta.edu for more information
- Survey



Contact Information

Website <https://build.peralta.edu>

Email buildperalta@peralta.edu

