

Status of Maintenance and Construction Projects

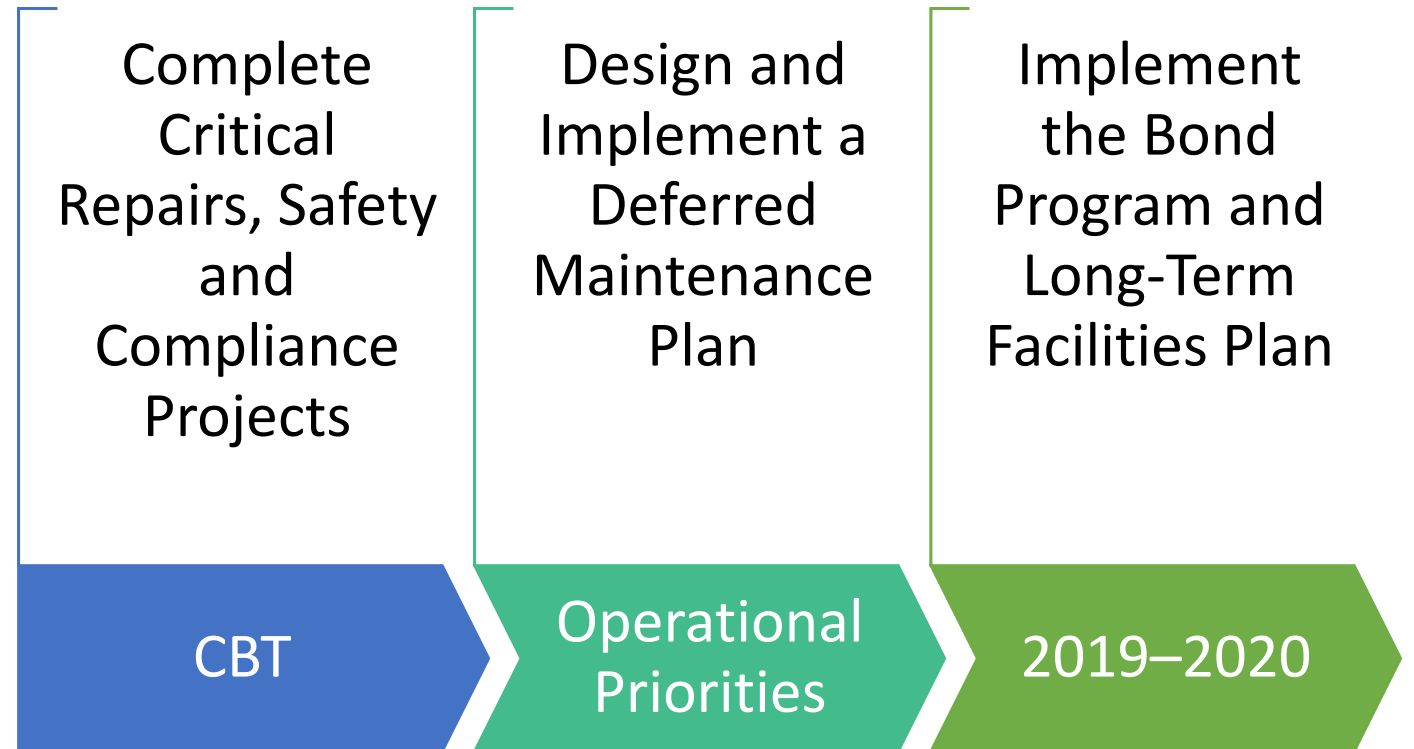
Presented to the Governing Board of Trustees

2020 June 9



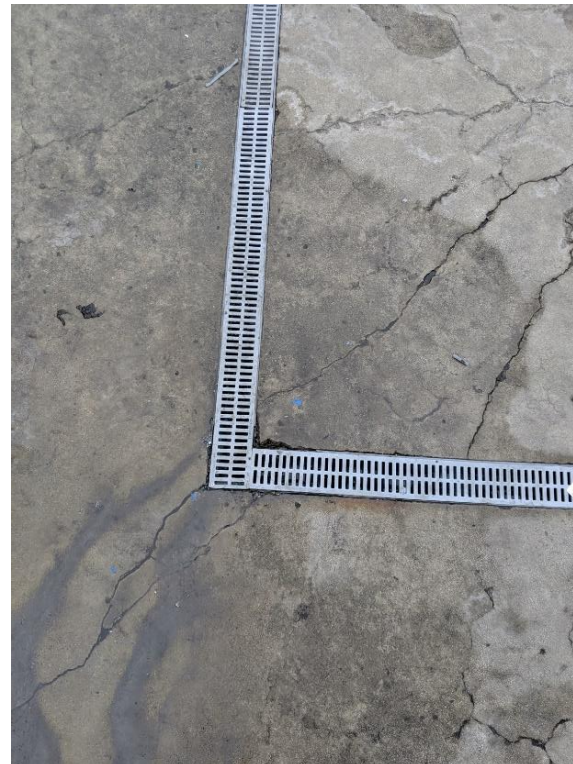
FCMAT - CBT

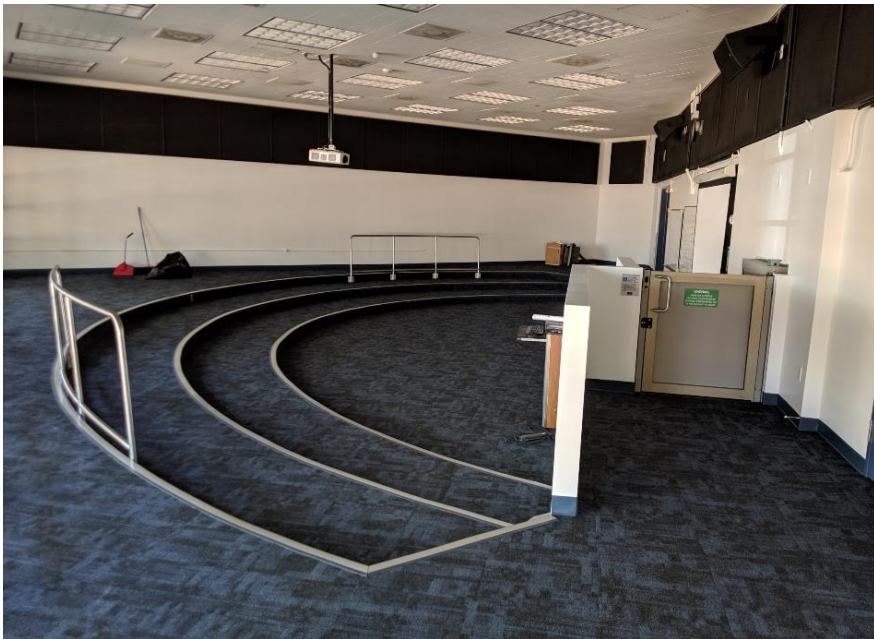
Organized by
Priorities
Incorporated
in FCMAT
Response



Complete Critical Repairs, Safety & Compliance Projects

- Fire Alarm Test, Inspect, Repair & Modernization (Laney, Merritt)
- Elevator Maintenance & Repair – Remove all red tags (All Campuses)
- ADA Compliance Projects (Laney, BCC)
- Pool Deck and Filter Improvements (Laney)
- Underground Storage Tanks (Laney)
- BEST Center Close Out with DSA (Laney)
- Trip Hazard (Merritt)
- Blue Light Phones (All Campuses)
- ADA Locker Room Upgrade (Laney)
- Comprehensive DSA Close Out (All Campuses)





ADA Issues & Trip Hazard
Resolved

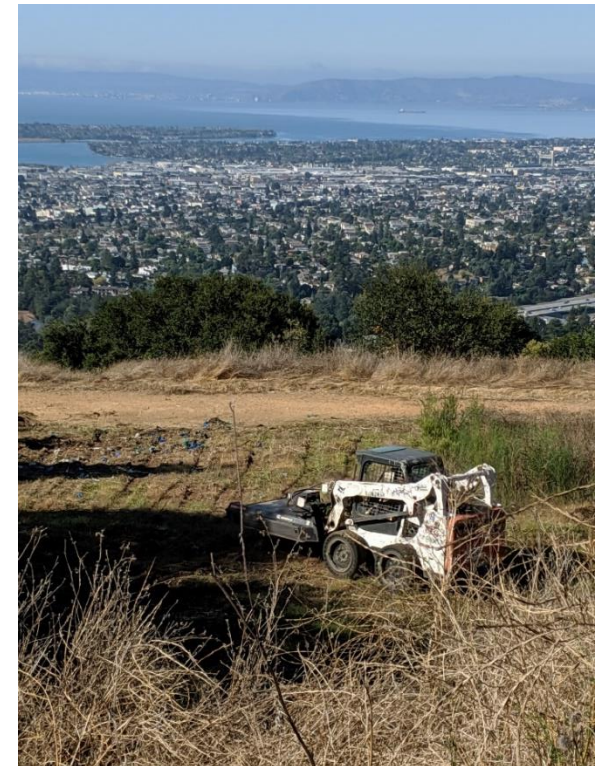
Laney Bldg. G - ADA Lift and Rails - After

Implement Deferred Maintenance Plan

- Started Roofing and Waterproofing Assessment (All Campuses)
- Electrical Transformer Fuse Replacement(Merritt)
- Electrical Transformer Replacement (Laney)
- Electrical Wiring Replacement (COA)
- Electrical Issues in Labs (Laney)
- Water Line Rupture (COA)
- Potholes and Trip Hazards (Laney)
- Glass Replacement (Laney)
- Elevator Upgrades (All Campuses)
- ADA Transition Plan (All Campuses)
- Annual Fire Mitigation (Merritt)
- Lighting Improvements (Laney)



Fuse replacement at Merritt



Fire Mitigation at Merritt

Implement Bond Program & Long-Term Facilities Plan

- Create and Approve Facilities and Technology Master Plan
- Hire Program Manager & Construction Managers
- Hire Architects for State Funded Projects
- Coordinate 5YCOP with Bond Spending Plan
- Create Vendor Outreach Program
- Complete Classroom Utilization Study
- Develop Program and Financial Controls System
- Approve Bond Spending Plan
- Hire “Bench” Consultants
- Negotiate PLA





College of Alameda

Auto Technology & Diesel

JK ARCHITECTURE
ENGINEERING

Final Schematic Design
April 27, 2020

COLLEGE OF ALAMEDA
Transportation Technology Facility



10.0 RENDERINGS - EXTERIOR



Aerial View from the North East



Aerial View from the South East

10.0 RENDERINGS - EXTERIOR



View toward facility main entry from North East



View toward facility main entry from North

10.0 RENDERINGS - EXTERIOR



View of facility from the North West



View of facility and yard enclosure from the South West from Ralph Appezato Parkway

10.0 RENDERINGS - INTERIOR



Automotive Technology Lab



Automotive Technology Lab

10.0 RENDERINGS - INTERIOR



Auto Body Technology Lab



Auto Body Technology Lab

10.0 RENDERINGS - INTERIOR



Diesel Technology Lab



Diesel Technology Lab



AUTOMOTIVE LAB

https://youtu.be/IBc7Wy4n8_k



Merritt College

Child Development Center – AE3 Architects

Horticulture Project – Noll and Tam Architects

CHILD DEVELOPMENT CENTER







AE3 PARTNERS
Architects + Project Managers









Merritt
Horticulture



Merritt
Horticulture



Merritt
Horticulture



Merritt
Horticulture



Merritt
Horticulture

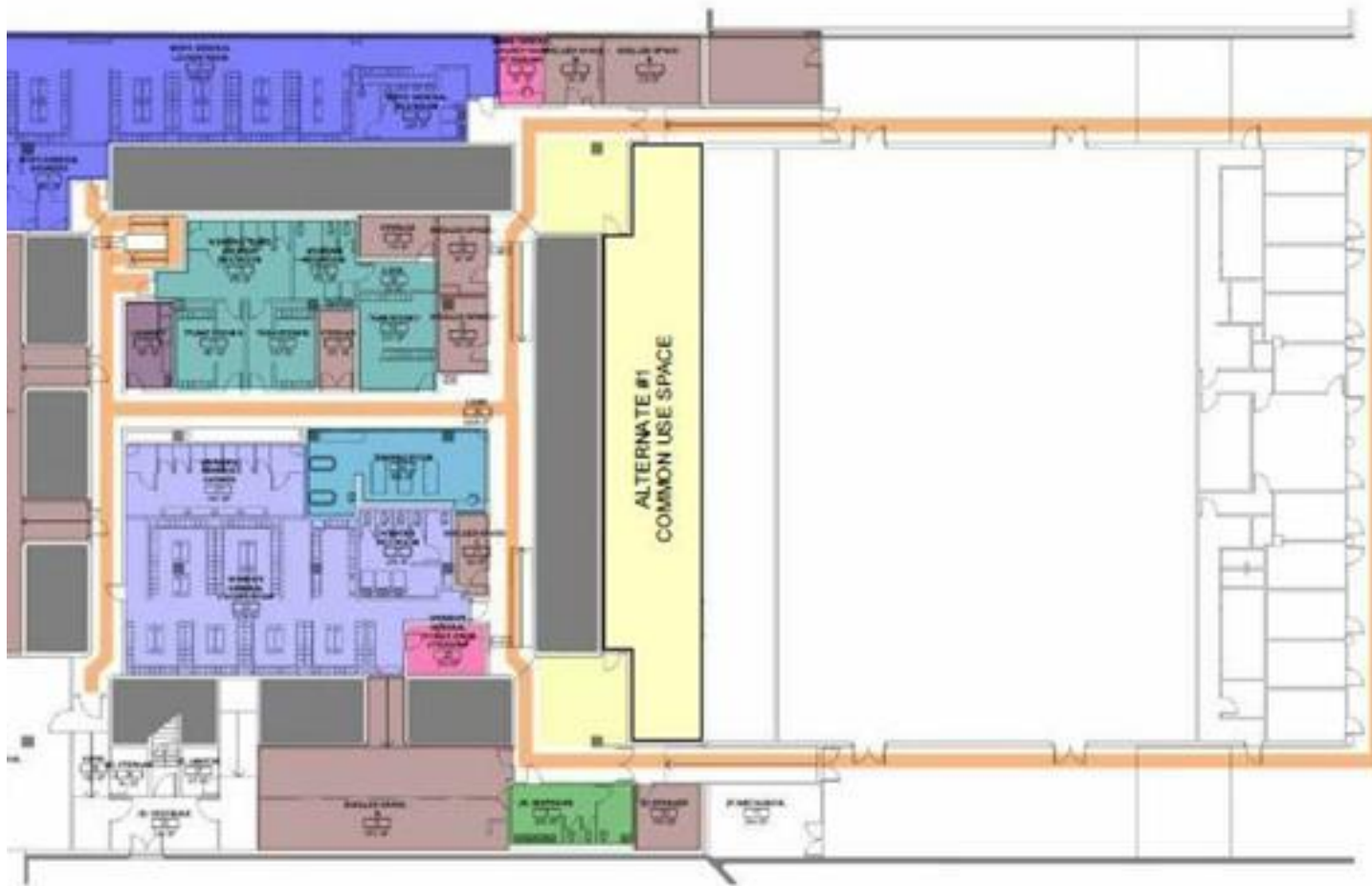


Laney College

Locker Room Modernization – Taylor Design

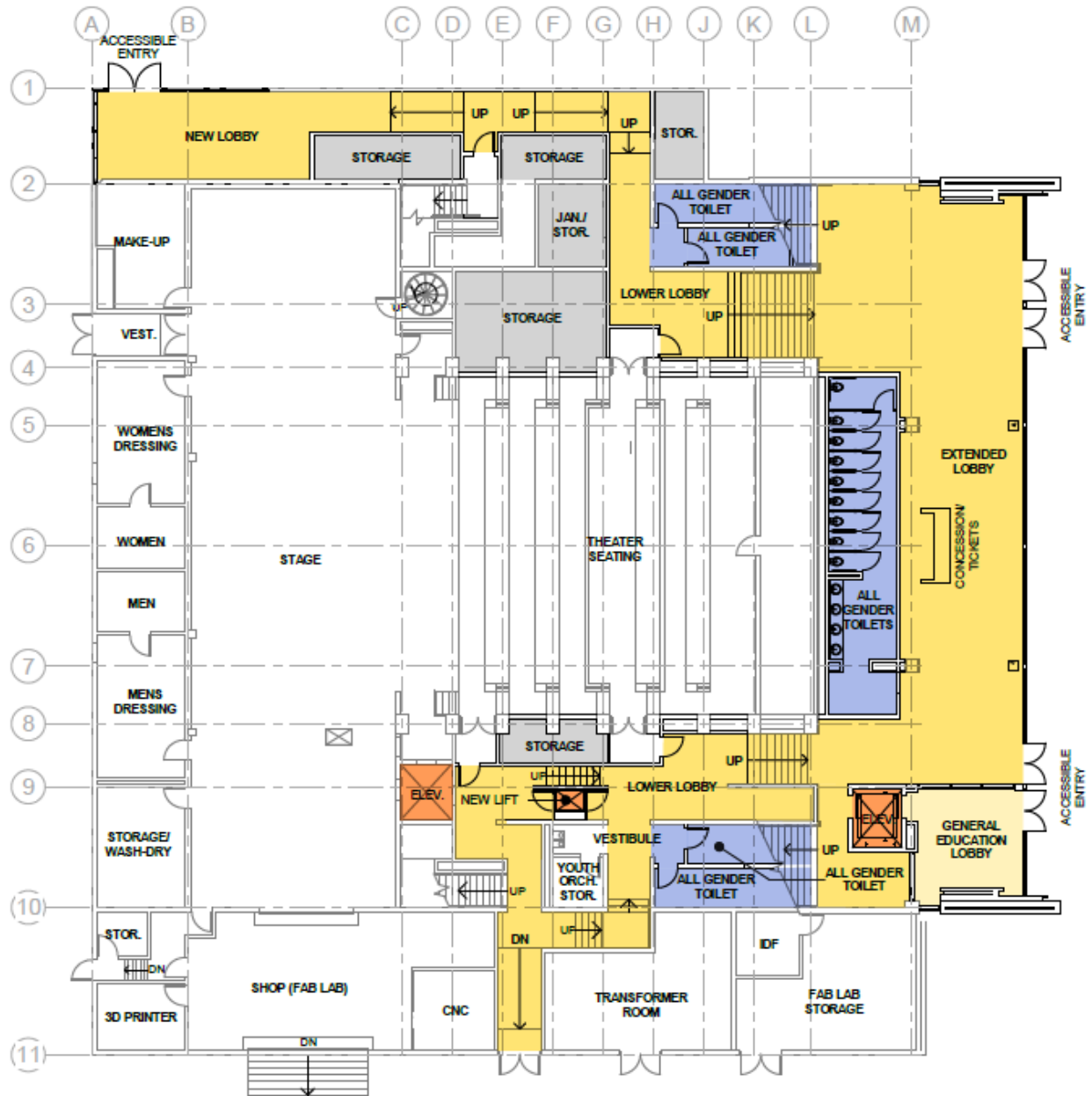
Theater Modernization – ELS Architects

Library / LRC – Noll & Tam Architects



- Open circulation, accessible
- Central training room
- Secure and light-filled
- Accessible team rooms
- Improved sightlines
- All-gender bathroom
- Right-sized men's day locker
- Enhanced storage
- Dedicated laundry room





LOBBY AND CIRCULATION IMPROVEMENTS

- LOBBY EXTENSION TO THE EAST WITH NEW CONCESSIONS/ TICKET BOOTH
- NEW LOBBY TO THE NORTH WHICH ADDRESSES CAMPUS MAIN ENTRANCE
- NEW LIGHT/SOUND LOCKS ON NORTH AND SOUTH OF AUDITORIUM

ACCESSIBILITY IMPROVEMENTS

- NEW LOBBY ELEVATOR:
 - SEPARATE SECURE VESTIBULE
 - ELEVATOR CONTROLS PROVIDE LIMITED ACCESS TO ONLY 3RD AND 4TH FLOORS DURING NON-PERFORMANCE USE
- EXISTING INCLINATOR, CHAIR LIFT VESTIBULE, AND CHAIR LIFT WILL BE REMOVED
- NEW OPEN CHAIR LIFT IN LOWER LOBBY
- EXISTING ELEVATOR WILL BE LIMITED TO KEYED ACCESS

RESTROOM IMPROVEMENTS

- NEW GENDER NEUTRAL RESTROOM IN LOBBY:
 - FULL HEIGHT PRIVACY STALLS
 - SHARED LAVATORY AREA
- EXISTING MEN'S AND WOMEN'S RESTROOMS CONVERTED TO GENDER NEUTRAL TOILET ROOMS

STORAGE



















Questions?

Status of Maintenance and Construction Projects

June 2020